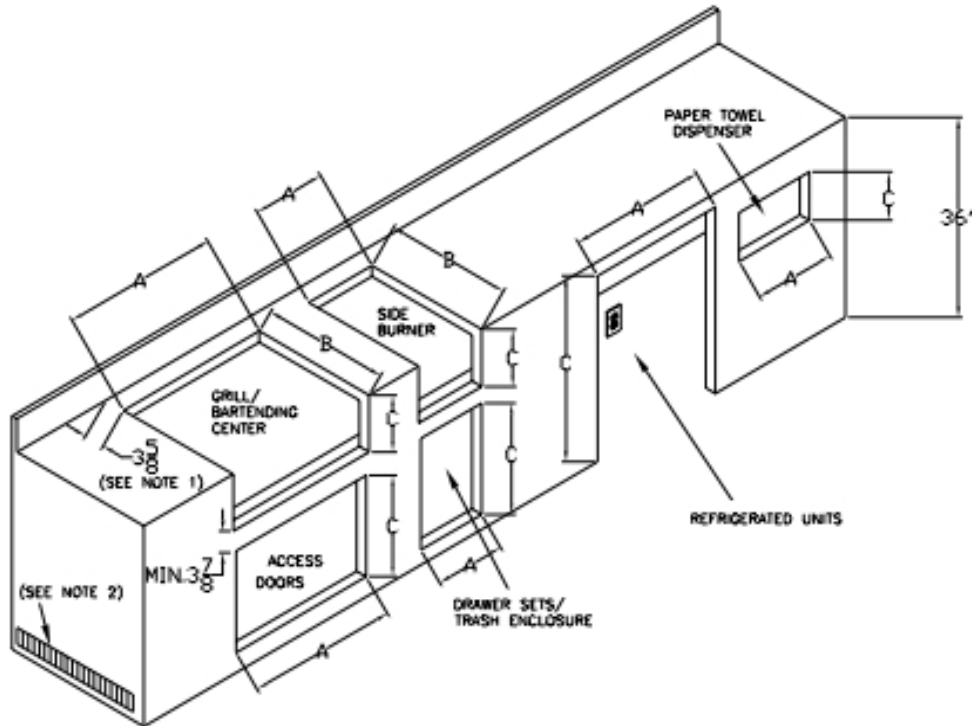




CUTOUT SIZES FOR SOLAIRE GRILLS & ACCESSORIES



Model #	Product	Width A	Depth B	Height C
IRBQ-15	15" Grill	14 1/2"	16 3/4"	9 5/8"
IRBQ-21	21" Grill	20"	16 1/4"	7 7/8"
IRBQ-21XL	21XL Grill	20"	21"	7 7/8"
AGBQ-27	27" Grill	26"	16 1/4"	8 7/8"
AG/IRBQ-27XL	27XL Grill	26"	21"	8 7/8"
AG/IRBQ-30	30" Grill	28 1/2"	23"	10 1/4"
AG/IRBQ-36	36" Grill	34 1/2"	23"	10 1/4"
AG/IRBQ-42	42" Grill	40 1/2"	23"	10 1/4"
AGBQ-56	56" Grill	54 1/2"	23"	10 1/4"
IRIJ-21	21" Insulated Jacket	25 3/8"	17 11/16"	9"
IRIJ-21XL	21XL Insulated Jacket	25 3/8"	22 9/16"	9"
IRIJ-27	27" Insulated Jacket	31 3/8"	17 11/16"	10"
IRIJ-27XL	27XL Insulated Jacket	31 3/8"	22 9/16"	10"
IRIJ-30	30" Insulated Jacket	35"	24 1/2"	11 1/4"
IRIJ-36	36" Insulated Jacket	41"	24 1/2"	11 1/4"
IRIJ-42	42" Insulated Jacket	47"	24 1/2"	11 1/4"
IRIJ-56	56" Insulated Jacket	61"	24 1/2"	11 1/4"
IRDT-24	Bartending Center	23 1/4"	23"	10 1/4"
IRDT-30	Bartending Center	28 1/2"	23"	10 1/4"
SSB-14	Single Side Burner	13 1/4"	13 1/4"	9"
IRSB-14	Dual Side Burner	13 1/4"	23"	10 1/4"
SPR7-OS	Refrigerator	24 1/2"	26"	34"
SP6DS-2D-OS	2 Drawer Refrigerator	24 1/2"	26"	34"

SP6DS-3D-OS	3 Drawer Refrigerator	24 1/2"	26"	34"
SBC-490-OS	Refrigerated Beer Cooler	24 1/2"	26"	35"
FMD/IRAD-21	21" Door	18 1/4"	-	18 1/4"
FMD/IRAD-30	30" Doors	27 1/4"	-	18 1/4"
FMD/IRAD-42	42" Doors	39 1/4"	-	18 1/4"
UD26S	Single Drawer - Shallow	27 1/8"	15"	3 11/16"
UD26D	Single Drawer - Deep	27 1/8"	23"	3 11/16"
2D14S	2 Drawer Narrow - Shallow	12 7/8"	15"	20 1/16"
2D14D	2 Drawer Narrow - Deep	12 7/8"	23"	20 1/16"
2D21S	2 Drawer Wide - Shallow	19 7/8"	15"	20 1/16"
2D21D	2 Drawer Wide - Deep	19 7/8"	23"	20 1/16"
3D14S	3 Drawer Narrow - Shallow	12 7/8"	15"	20 1/16"
3D14D	3 Drawer Narrow - Deep	12 7/8"	23"	20 1/16"
3D21S	3 Drawer Wide - Shallow	19 7/8"	15"	20 1/16"
3D21D	3 Drawer Wide - Deep	19 7/8"	23"	20 1/16"
PTH1	Paper Towel Holder	14 7/8"	8"	8 3/4"
TRE1	Trash Enclosure	12 7/8"	19"	20 1/16"

Note 1: Min. 2" clearance required between edge of cutout and inside back wall of enclosure for gas regulator.

Note 2: Ventilation of island should be in accordance with local codes or accepted practice.

SPECIAL NOTE: Grill installation into combustible enclosure requires insulated jacket. Order part #SOL-IRIJ-XX, where "XX" is the size of the grill in inches.

NATURAL GAS SUPPLY NOTE: A standard 3/8" ID flexible natural gas supply hose has a maximum capacity of 60,000 BTUs and should be used with 27" and 30" grills only. A 1/2" ID natural gas supply hose is required for larger models, or for 30" grills with a side burner. The proper hose is available from Solaire, order part #SOL-12HOSE12.



DETAIL FOR FLUSH-MOUNTING

If the countertop of your island overhangs the cabinet face, the countertop must be notched to accommodate the control panel or front of the Solaire equipment.

CLOSE WINDOW